

tion of more material may bring to light further details about the biology of this small but interesting species.

The author is deeply indebted to Dr. N. Balakrishnan Nair, Reader in Oceanography, for his guidance.

Oceanographic Laboratory,
Ernakulam-6, Kerala.

K. KRISHNA PILLAY

REFERENCES

- CHIRAPGAR, B. F. 1957. *Taraporevala Marine Biological Station, Contribution*, No. 1 : 1-89.
- * EDMONDSON, C. H. 1954. *Occ. Pap. Bishop Mus. Honolulu*, 21 (12) : 217-74.
- PILLAI, N. KRISHNA. 1951. *Bull. Cent. Res. Inst. Univ. of Travancore, Trivandrum*, ii, No. 1 c : 1-46.
- PREMKUMAR, V. K. 1962. *Crustaceana*, 3 (4) : 319-320.
- * SHEN, C. J. 1937. *Bull. Raffles Mus.*, 13 : 96-139.
- * STEPHENSEN, K. 1945. *Dan. Sci. Invest. Iran*, 1945 (4) : 57-237.
- STEPHENSON, W. AND CAMPBELL, B. 1960. *Aust. J. Mar. Fresh. Res.*, 11 (1) : 73-122.

*Not seen in original.

ON A NEW RECORD OF *METAPENAEUS STEBBINGI* NOBILI, IN INDIAN WATERS

THE geographical distribution of *Metapenaeus stebbingi* is limited. It is known to occur in the Red Sea and Suez (Nobili 1904 and 1906, Tattersall 1921 and Burkenroad 1934), Delagoa Bay of South Africa (Barnard 1950) and off Karachi in Pakistan (Tirmizi 1962).

Thirty-five males and sixty females of *M. stebbingi*, measuring 56-90 mm. and 57-113 mm. respectively were collected from the inshore waters of Kutch (Gulf of Kutch) during July 1961-June 1962. It was found mixed with other commercial species of prawns in the catches of *gunja* (stake-net). This species is recorded for the first time from the Indian waters and thus extends the limits of its geographical distribution.

Specimens in fresh condition are greyish and faintly speckled. They agree in general with the description of the species given by the earlier authors, except in the presence, in males, of an upturned spinous projection on either side of the stem of the petasma, a little above the joint with the pleopod (Fig. 1).

Tirmizi (1962) claims to have noticed differences in the structure of the petasma and thelycum from that described by the earlier authors. But all the structural

details noticed by Tirmizi (1962) are discernible in the figures given by Tattersall (1921).

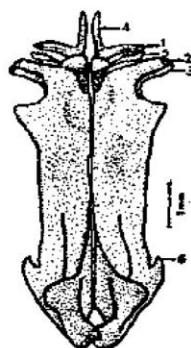


FIG. 1. Petasma of *Metapenaeus stebbingi* Nobili. 1, 2 & 3, lateral projection; 4, apical styliform process; 5, lateral stylet; 6, spinous projection.

Central Marine Fisheries Research Unit,
Mangalore.

S. RAMAMURTHY

REFERENCES

- NOBILI, G. 1904. *Bull. Mus. Hist. nat. Paris*, 10 : 228-238.
 ———— 1906. *Ann. Sci. nat. (Zool.)*, Ser. 9, 4 : 1-347.
 TATTERSALL, W. M. 1921. *Journ. Linn. Soc. Lond. (Zool.)*, 34 : 345-398.
 BURKENROAD, M. D. 1934. *Bull. Bingham Oceanogr. Coll.*, 4 (7) : 1-109.
 BARNARD, K. H. 1950. *Ann. S. Afr. Mus.*, 38 : 1-837.
 TIRMIZI, N. M. 1962. *Crustaceana*, 4 (2) : 103-106.

ON THE OCCURRENCE OF THE CARIDEAN PRAWN *THALAS-SOCARIS LUCIDA* (DANA) IN THE STOMACH OF *NEOTHUNNUS MACROPTERUS* (TEMMINCK AND SCHLEGEL) FROM THE ARABIAN SEA

ON 8th January 1962, while on a regular research cruise of *R. V. VARUNA*, one specimen of a yellowfin tuna *Neothunnus macropterus* was caught on the trolling line from a medium-sized shoal sighted outside the continental shelf off Quilon. The specimen was a male measuring 68 cm. in total length. On examination of the stomach it was found to be gorged with small-sized shrimp along with a few other items such as 1 small *Caranx* sp., 6 squids and 3 semi-digested unidentifiable